



SWEETWATER
BRANCH
ACADEMY
MIDDLE SCHOOL

IMPORTANT DATES:

- Sep 7: Labor Day Holiday
- Sep 8: After School Clubs/
Activities Starts
- Sep 10: Curriculum Night
- Sep 14 : Picture Day

www.swbacademy.org

Inside this issue:

| | |
|------------------------------|-----|
| Principal's Corner | 1-2 |
| Assistant Principal's Corner | 3 |
| PVO Meeting | 4 |
| From the From Office | 5 |
| Welcome Picnic 2009 | 5 |
| The Fastest Typer | 5 |
| Geographic Bee | 6 |

Sweetwater News

Volume 2, Issue 2

Friday, September 4, 2009

Principal's Corner

Dear Students & Parents,

Congratulations! SWBA has been awarded the 2009 School Recognition Program (SRP) award.

I just received a letter from the Alachua County Board of Education regarding SWBA has been awarded the 2009 School Recognition Program (SRP) award by The Florida State Commissioner of Education. Please see the below for more information about the award. Congratulations to our students, parents and staff members for continued success as a quality school of choice in our community!

1. What is the Florida School Recognition Program?

The Florida School Recognition Program provides public recognition and financial awards to schools that have sustained high student performance or schools that demonstrate substantial improvement in student performance. The program was created by the Florida Legislature in 1997 and funds were first appropriated for awards in 1998. The A+ Plan for Education standardized program criteria and awards in 1999.

2. Which schools are eligible for recognition under this program?

- Schools that sustain high performance by receiving a school grade of "A;" or
- Schools that demonstrate exemplary improvement due to innovation and effort by improving at least one letter grade; or
- Schools that improve more than one letter grade and sustain the improvement the following school year; or
- Schools designated as Alternative Schools that receive a school improvement rating of "Improving" or improve at least one level.

3. What is the award amount for each school?

Each recognized school will receive \$75 per full-time equivalent (FTE) student based on last year's enrollment

Welcome Picnic

We had a great grade welcome picnic on Saturday, August 19 at Kanapaha Park. It was so nice to see students, teachers and parents having fun all together. You can have a look at the pictures from our web site.

Principal's Corner (Continued)

Labor Day- No School

Monday, September 7, 2009

Student Picture Day

Student picture day will take place on Monday, September 14, 2009. Students should wear their red SWBA shirts on picture day. All students will have their picture taken for student ID purposes. Please contact Mrs. Schutt at vschutt@swbacademy.org or Ext. 110 should you have any questions.



Curriculum Night

Please join us for Curriculum Night from 6-7:30 pm on Thursday, September 10th. Parents/guardians will have an opportunity to go to each of their student's classes and get an overview from their teachers about the curriculum, materials and books that will be used this year.

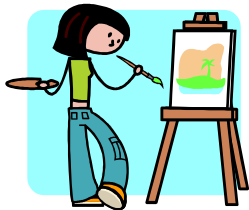
After School Clubs/Activities Begin

After-school activities started on Tuesday, September 8, 2009. We are pleased to see a lot of participants in the various clubs. If you have any questions about after-school activities, please contact Mr. Baslanti ubaslanti@swbacademy.org or 352-375-8838 extension 112. After school activities/clubs end at 4:40pm. Please pick up your student by 4:40 pm.

Home Visits

Experience and research from all over the United States show that the interaction with the student's family at their home is a very effective way to contribute to students' academic and behavioral progress.

Please contact Dr. Baslanti at ubaslanti@swbacademy.org) if you wish to make home visit arrangements with your student's teachers. Depending on our teacher's availability, at least two teachers will visit our students and parents at their homes. Our teachers visited 3 of their students this week and we are expecting to visit all of our students at their homes. You may reach the home visit photos from the following link http://www.swbacademy.com/index.php?option=com_content&view=article&id=68:home-visits&catid=55:home-visits&Itemid=97.



Picture Day is September 14th.

Have a nice weekend and Labor day.

Sincerely,
Fethi Goktepe, Principal

Assistant Principal's Corner

SWBA Connect,

Our online progress monitoring system, SWBA Connect, is up and running. We were not able to use it earlier because of some necessary updates in its infrastructure. Apart from what we had in the system last year, we added new components for teachers to report minor violations (refer to the Conduct of Code) through a computerized system.

Teachers have already started using the system to share information about their classrooms. Using this tracking system, parents can view their child's grades, daily homework, and discipline record. Although the system enables parents to send messages to teachers, I still recommend sending direct emails to teachers using their school email accounts instead of using the system's messaging tool. Direct email is faster and more convenient for teachers to respond to parents' requests.

We are going to send the access information (the link, your login ID and password) to your attention starting Monday. Please check back with me if you haven't received your access information from your child by the end of next week.

If you want me to email you your access information, please email at ubaslanti@swbacademy.org

Family Contracts

Most of the students have returned their student/parent agreement contracts from the student agendas. If you haven't turn your in yet, please do so to your homeroom teachers ASAP.

Clubs/Academic Teams/Tutoring

Clubs, academic teams, and tutoring are all starting next week. We are working on finalizing the club rosters based on choices you have made. Lists will be posted next Monday up on the bulletin boards in the cafeteria and the hallway. If you didn't turn in your club sign-up sheets, but would like to change your clubs after you are assigned into one, contact me so that you can fill-out the club change request form.

Remember! Clubs and academic teams are a privilege and you must follow the school wide rules and procedures while you are in your clubs and academic teams. Your teachers/coaches will also take attendance every week. If you don't attend a club or academic team more than three times without an excuse, you may lose your spot. You don't need to sign-up for tutoring. Just show up!

If you lost your club/academic team/tutoring schedule, stop by the front desk to grab another copy.

Looking forward to a wonderful school year.

Dr. Baslanti

ubaslanti@swbacademy.org

PVO Corner



PARENTS: Do you shop at Target and have a REDCARD? If you do and want to participate you can help the school raise funds by simply designating Sweetwater Branch Academy School ID: 149765 as your school of choice to receive 1% of all your purchases. This program doesn't cost you any additional money, Target gives 5% of its profits to the community and one way they do that is through the designated funds for schools program. This year the school will receive \$67 in September from last years program. This doesn't sound like a lot until you find out that only 2 parents participated. This year we would like to increase our participation. If you have one of the cards below you can go to Target Online and designate Sweetwater Branch Academy School ID: 149765 as your school of choice to receive funds.

- Target Visa Card- A Visa Card that can be used anywhere, when you shop at Target you get 1% of purchases and ½% of all other purchases.
- Target Credit Card-This is a store credit card only so you get 1% of all target purchases.
- Target Check Cashing Card is like a debit card that is only good at target but the money can come directly from your bank account so it is like paying cash but you still get the 1% for the school.
- NOTE: Unfortunately if you pay with cash without a REDCARD you don't get any funds.

If you don't have a card and want to participate you will need to apply for one of the above cards. You can apply at your local store or online at Target.com then designate Sweetwater Branch Academy school ID: 149765 as your choice for the 1% benefit. This fundraiser doesn't require anyone to get up early on a Saturday morning to wash cars, or sell candy, just get the card and use it when you purchase items at Target. If you only pay cash for what you buy you can still participate by choosing the Target Check Card, which is a debit card so the money comes right out of your checking account. Please note that the school name will not always come up if you search for it so pay attention to the school ID number 149765, this is the easiest way to ensure you have our school. Target also offers Grants for Teachers. This program has a few ways to funds schools:

- Target funds arts programs that bring the arts to schools or make it affordable for youth and families to participate in cultural experiences, such as school touring programs, field trips to the theater or symphony, or artists residencies and workshops in schools. Programs that make the arts accessible to schoolchildren are of particular interest to us.
- Target gives 5,000 grants of up to \$800 each to help students explore the world outside the classroom. And our stores provide grants to support local arts, early childhood reading and family violence prevention programs.
- The Target team members will improve hundreds of K-12 school libraries this year, opening new chapters of learning for thousands of kids nationwide. It's one more way that Target Volunteers are getting involved in our communities.

If you work for Target, please let us know. We need help with our library! Thanks!

From the Front Office

Parents, we are going into our 3rd week of school. Students should know how to find and open their lockers by now. Due to the number of students, and with regard to their safety as well as yours, we ask that you please let your child go to their locker by themselves.



SWBA Welcome Picnic 2009

This past weekend was SWBA's annual welcome picnic. Each year, to start the year off right, SWBA gathers together at Kanapaha Park with students, teachers, staff and family to enjoy food, games, and social enjoyment. Entering into our second year of this tradition, we enjoyed the attendance of close to 100 people! Many parents and students participated by bringing delicious side dishes and desserts. Between cooking, eating, and enjoying an afternoon in the beautiful Florida sun, students, family and staff were able to get to know each other and enjoy a day away from school. We would like to thank everyone who participated in this event and look forward to other upcoming activities with our wonderful school!



The Fastest Typer Competition

Mr. Gurcan is planning to organize a competition called "The Fastest Typer". It will be school wide and open to all SWBA students. The date will be Wednesday, September 9th, 2009. Between 8:00-8:30 am. The three fastest students will be announced in the next issue of the newspaper.



First Lego League Calendar

First Lego League is about to start.! Here is the calendar:

| | |
|-----------------------|---|
| September 3 | International Challenge Release |
| Mid – Late September* | Team Registration Closes / Last Day to Order Products |
| November – January | Tournament Season |
| April 2010 | World Festival |



Piecing it Together with Ms. Ratledge

- Language Arts classes are starting the year off right with their first project, a novel project, due September 23rd, 2009. They received handouts in class which explain the project and the grading rubric. Please see Ms. Ratledge for more details.
- Reading classes are reading, reading, reading! They are learning and using multiple reading strategies to decipher and decode meaning from multiple texts.



Journalism Club

Journalism club will start Monday September 14th! We will be getting a late start due to our Labor Day holiday on September 7th. Journalism club members will be learning journalism techniques, which will include working as a journalism staff, creating original articles and segments, doing research, performing interviews, and using Microsoft Publisher software to organize our journalism newsletter, the Jaguar Digest. J

Put it before them briefly so they will read it, clearly so they will appreciate it, picturesquely so they will remember it and, above all, accurately so they will be guided by its light.

--Joseph Pulitzer

Spell it Out with the Spelling Bee Club

The spelling bee club will begin Thursday, September 10th. This club will learn and work on spelling skills to help them compete in the SWBA spelling bee, which could qualify them for the Alachua County Spelling Bee and the Scripps National Spelling Bee.



SWEETWATER
BRANCH ACADEMY



www.swbacademy.org

From Ms Cairns-Social Studies

2009 Geography Bee
Sweetwater Branch Academy Middle School

Each year thousands of schools in the United States participate in the National Geography Bee using materials prepared by the National Geographic Society. The contest is designed to encourage teachers to include geography in their classrooms, spark students interest in the subject and increase public awareness about geography.

Schools with students in grades four through eight are eligible for this entertaining and challenging test of geographic knowledge. Sweetwater Branch Middle School will be participating in this year's event and students who wish to participate will be prepared for the school-level Geography Bee. The winner of our school-level bee will have the opportunity to participate at the district level, state level and possibly at a national level in Washington, DC.

The Geography Bee is a great learning experience and a fun way to learn about the world. Students who participate will better understand how world systems function and about people and places.

Important Dates:

- October 15, 2009:
School registration deadline for the 2009 National Geographic Bee
- November 9, 2009 through January 15, 2010
School-level Geographic Bees
- January 31, 2010
Qualifying test must be received from registered schools
- April 9, 2010
State-level Geographic Bee (Jacksonville)
- May 25-26, 2010
National Geographic Bee, Washington, D.C

If you have any questions please email me Ms. Kathryn Cairns at kcairns@swbacademy.org or go to <http://www.nationalgeographic.com/geographicbee/>

